

Drain: THOMAS PIERCE **Drain #:** 255
Improvement/Arm: _____
Operator: J. LIVINGSTON **Date:** 3-25-04
Drain Classification: Urban/Rural **Year Installed:** 1930

GIS Drain Input Checklist

- Pull Source Documents for Scanning JL
- Digitize & Attribute Tile Drains _____
- Digitize & Attribute Storm Drains _____
- Digitize & Attribute SSD _____
- Digitize & Attribute Open Ditch JL
- Stamp Plans JL
- Sum drain lengths & Validate JL
- Enter Improvements into Posse _____
- Enter Drain Age into Posse JL
- Sum drain length for Watershed in Posse JL
- Check Database entries for errors JL

Gasb 34 Footages for Historical Cost
Drain Length Log

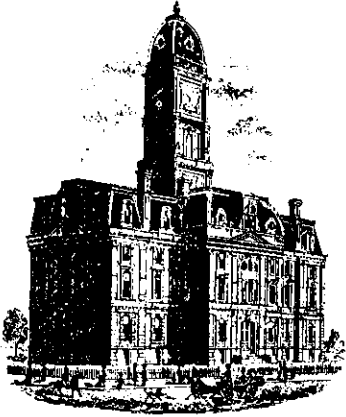
Drain-Improvement: THOMAS PIERCE

| Drain Type: | Size: | Length | Length (DB Query) | Length Reconcile | If Applicable | |
|-------------|-------|--------|----------------------|---------------------|---------------|------------|
| | | | | | Price: | Cost: |
| | | | | | | |
| | | | | | | |
| OPEN DITCH | — | 15550 | 15550' | | 19.55/lf | 304,002.50 |
| | | | | | | |
| | | | | | | |
| | | | | | | |
| | | | | | | |
| | | | | | | |
| | | | | | | |
| | | | | | | |
| | | | | | | |
| | | | | | | |
| | | | | | | |

Sum: 15550' 15550' \$304,002.50

Final Report: _____

Comments:



SURVEYOR'S OFFICE
Hamilton County

Kenton C. Ward, Surveyor

Suite 146

776-8495

One Hamilton County Square

Noblesville, Indiana 46060-2230

May 24, 1993

TO: Hamilton County Drainage Board

RE: Thomas ^{Pierce}~~Pearce~~ Drain

On May 24, 1993 representatives from Hamilton, Boone and Clinton Counties met to discuss the Thomas Pearce Drain. At that time, due to the high percentage of objections to the reconstruction of the drain in Hamilton and Clinton Counties, it was decided not to create a Joint Drainage Board for that purpose. Instead, it was decided that Boone and Clinton Counties would form a Joint Board for maintenance and Hamilton County would set the portion of the drain within Hamilton County on maintenance also. A Joint Board for reconstruction would only be established when a substantial number of landowners in all three counties petition for reconstruction.

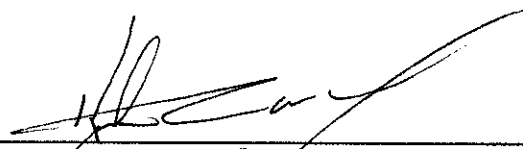
At this time the Thomas Pierce is number 18 on the reconstruction classification list. However, due to the above described meeting, I recommend it be placed on the maintenance classification list at this time. The drain was requested for classification on April 22, 1980 by Luther Powell.

Hamilton County has 1,406.63 acres in the Pearce Drainage Shed. I recommend the Board assess the Drainage area \$3.00 per acre with a \$10.00 minimum. This will bring in \$ 4263.38 annually to the fund. Although it will not solve all the problems on the drain it will be enough to take care of debris blocking the flow, beaver dams, partial cleaning and erosion control.

I recommend a hearing for this be set for August 1993.

23

9:00am

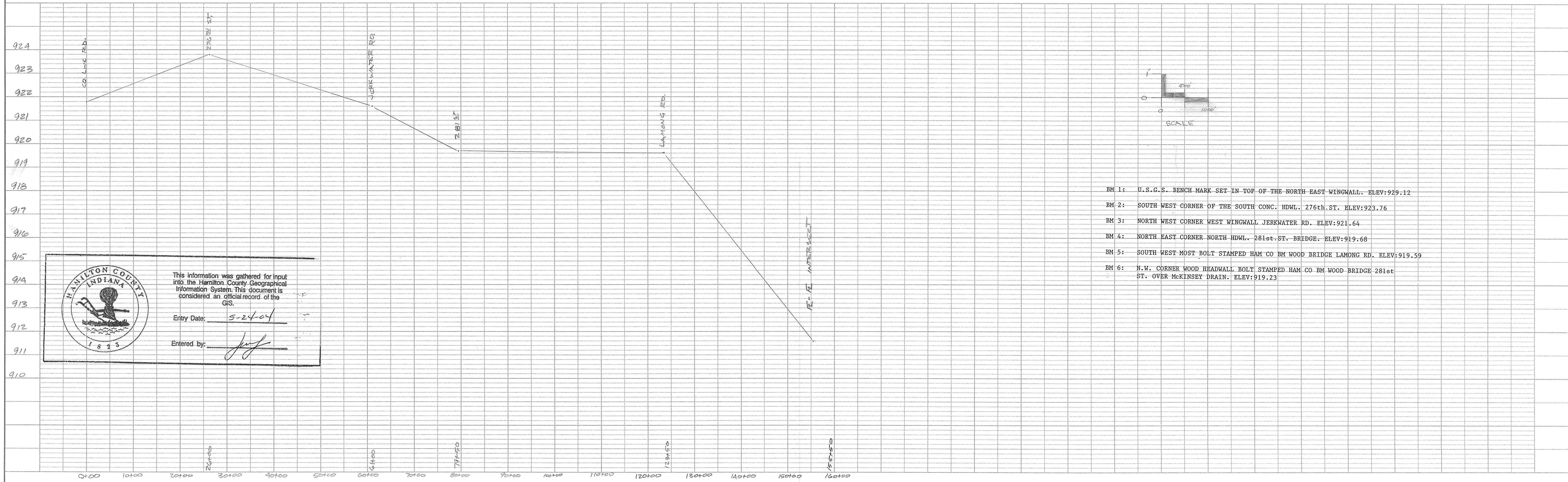
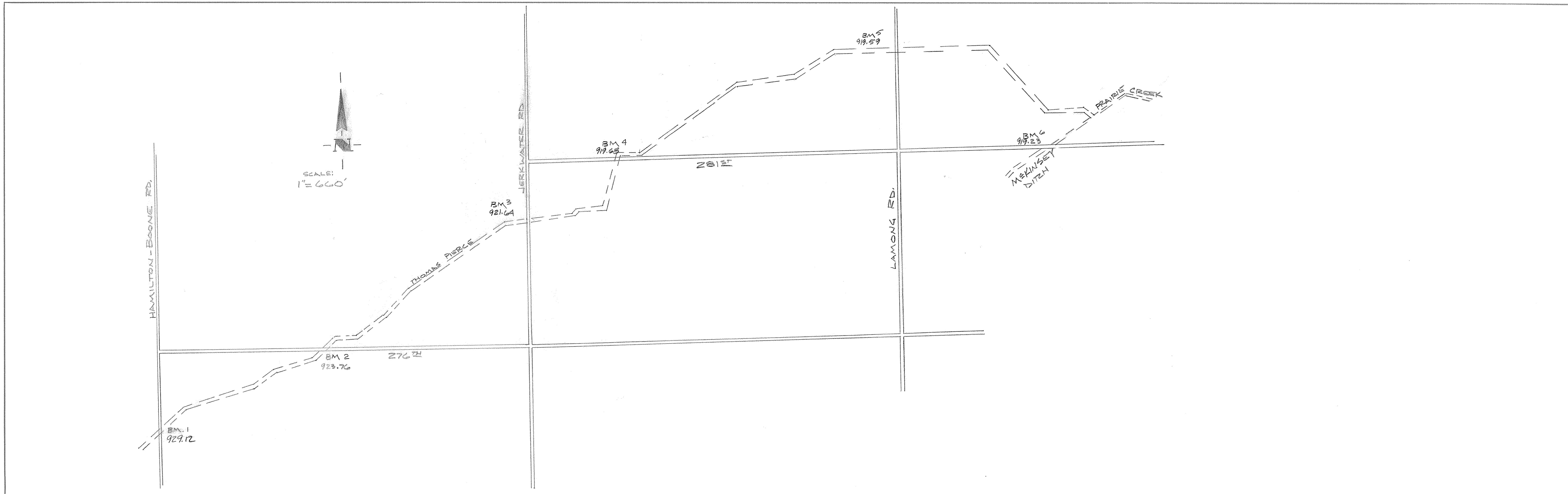


Kenton C. Ward
Hamilton County Surveyor

KCW/no

| | | |
|-----------|---------------|------|
| PLAN | REVISIONS | DATE |
| | BY | |
| NOTE BOOK | NO. OF SHEETS | |
| | NO. | |

| | |
|-----------|------|
| PROFILE | DATE |
| | BY |
| NOTE BOOK | NO. |
| | |



- BM 1: U.S.G.S. BENCH MARK SET IN TOP OF THE NORTH EAST WINGWALL. ELEV: 929.12
- BM 2: SOUTH WEST CORNER OF THE SOUTH CONC. HDWL. 276th. ST. ELEV: 923.76
- BM 3: NORTH WEST CORNER WEST WINGWALL JERKWATER RD. ELEV: 921.64
- BM 4: NORTH EAST CORNER NORTH HDWL. 281st. ST. BRIDGE. ELEV: 919.68
- BM 5: SOUTH WEST MOST BOLT STAMPED HAM CO BM WOOD BRIDGE LAMONG RD. ELEV: 919.59
- BM 6: N.W. CORNER WOOD HEADWALL BOLT STAMPED HAM CO BM WOOD BRIDGE 281st ST. OVER MCKINSEY DRAIN. ELEV: 919.23

HAMILTON COUNTY INDIANA

This information was gathered for input into the Hamilton County Geographical Information System. This document is considered an official record of the GIS.

Entry Date: 5-24-04

Entered by: *[Signature]*